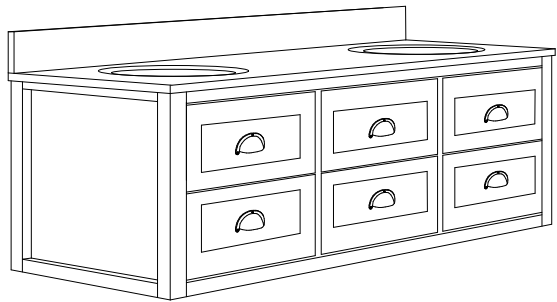
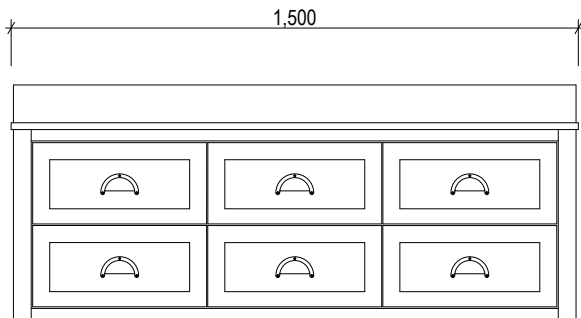


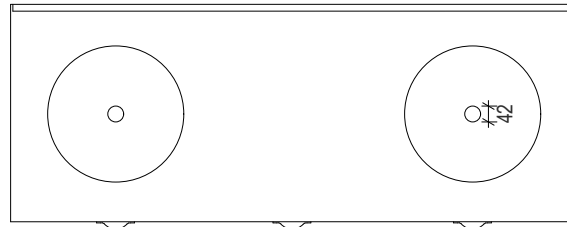
500
100
18



618
100
18
215
215

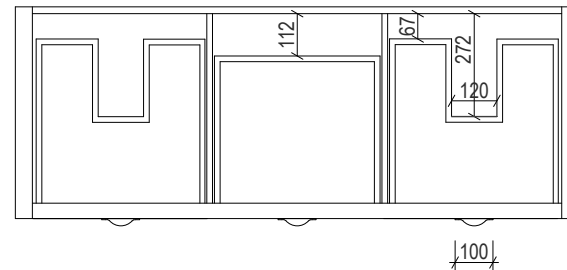


1,500
98 360 584 360 98

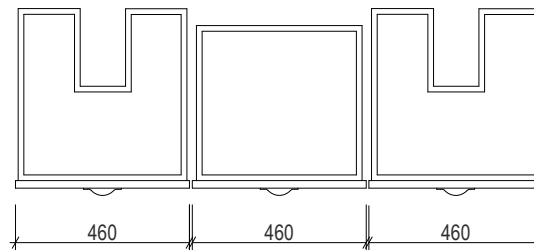


110
360
573
103

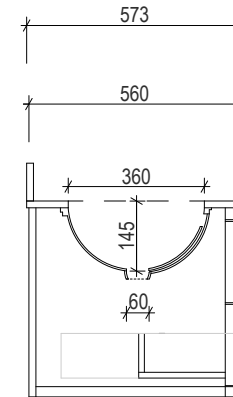
1,490



560
560



410
475
100



573
560
110
18
500



Vanity By Design

ABN: 99 121 837 143

Brisbane Address:

241 Monier Road, Darra QLD 4076

Sydney Address:

6.02 / 75 Mary Street, St Peters NSW 2044

Phone: Brisbane (07) 3376 6055

Sydney (02) 9550 4987

Email: enquiries@vanitybydesign.com.au

Website: <https://www.vanitybydesign.com.au/>

Name:	North Haven 1500 Double
Size :	1500 (W) mm x 573 (D) mm x 518 (H) mm
Type:	Wall Hung
Cabinet Material:	Solid Sustainable Plantation Timber
Basin Material:	Ceramic under-mount basins with overflow protection
Bench Top Finish:	Carrara white marble
Splashback:	Full width removable splashback
Taphole Options:	No taphole, 1 taphole at 45°C on right or left
Vanity Colour Options:	Black, White, South Hampton Grey, Duck Egg, Grey Garden, Navy

Note:

Mirrors, Wastes and Tapware not included.
Plumbing fixtures must be installed by a qualified plumber (waste not supplied).
Vanity must be installed by a qualified tradesperson.
Failure to do so may void the warranty.
Vanity By Design vanities include a 5 year warranty on cabinets and tapware and 12 month warranty on tops, basins, mirrors, mirror shelves and mirror cabinets.

Caution:

Component may be heavy and require two people to lift.
Do not stand or sit on vanity.