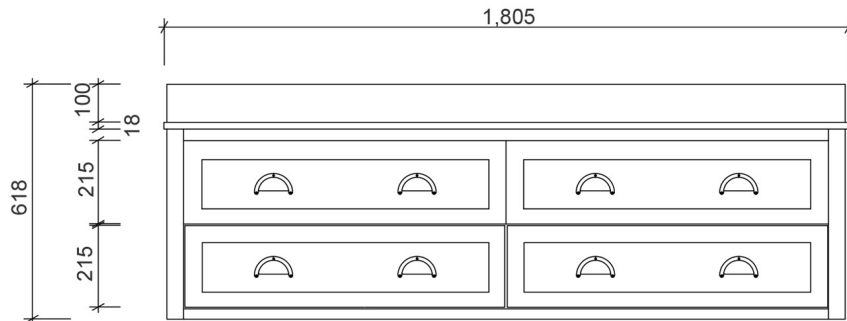
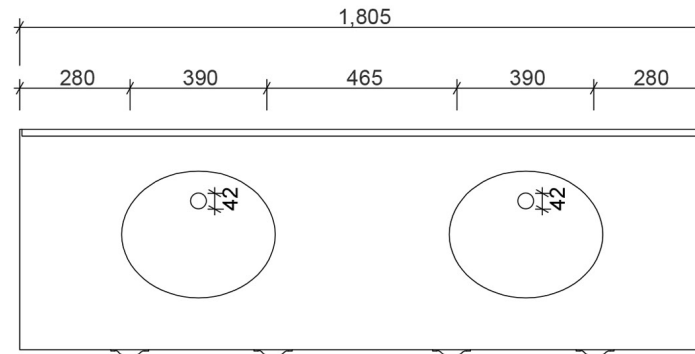


500
100
18

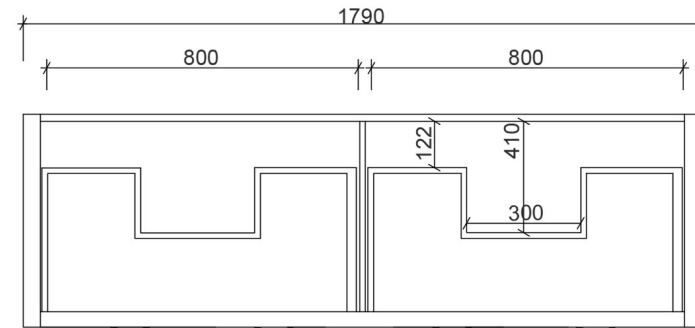


618
100
18
215
215

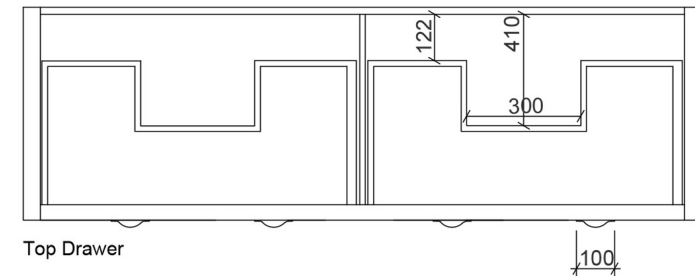


1,805
280 390 465 390 280

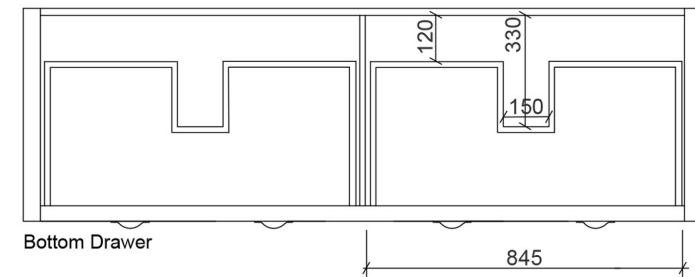
138
315
573
120



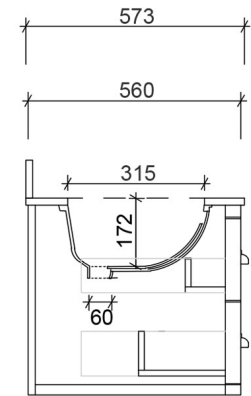
1790
800 800



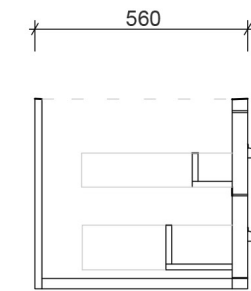
Top Drawer



Bottom Drawer



573
560



Section - Cabinetry only

100
18
500

100
18
500



Vanity By Design

ABN: 99 121 837 143

Brisbane Address:
241 Monier Road, Darra QLD 4076

Sydney Address:
6.02 / 75 Mary Street, St Peters NSW 2044

Phone: Brisbane (07) 3376 6055
Sydney (02) 9550 4987

Email: enquiries@vanitybydesign.com.au

Website: https://www.vanitybydesign.com.au/

Name:	North Haven 1800 Double
Size :	1805 (W) mm x 573 (D) mm x 518 (H) mm
Type:	Wall Hung
Cabinet Material:	Solid Sustainable Plantation Timber
Basin Material:	Ceramic under-mount or top mount basin
Bench Top Finish:	Smartstone options *
Splashback:	Removable splashback (not full width splashback)
Taphole Options:	No taphole, 1 taphole or three tap holes
Vanity Colour Options:	Black, White, South Hampton Grey, Navy

Note:

Mirrors, Wastes and Tapware not included.
Plumbing fixtures must be installed by a qualified plumber (waste not supplied). Vanity must be installed by a qualified tradesperson. Failure to do so may void the warranty.
Vanity By Design vanities include a 5 year warranty on cabinets and tapware, 2 year warranty on tops and basins and 12 months warranty on mirrors.

Caution:

Component may be heavy and require two people to lift.
Do not stand or sit on vanity.