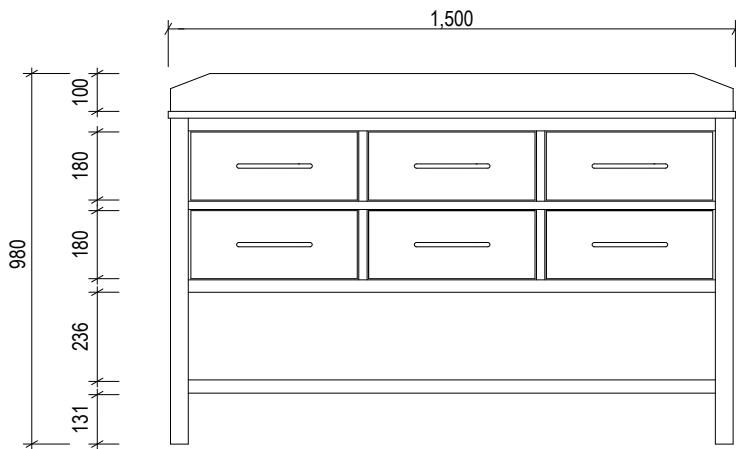
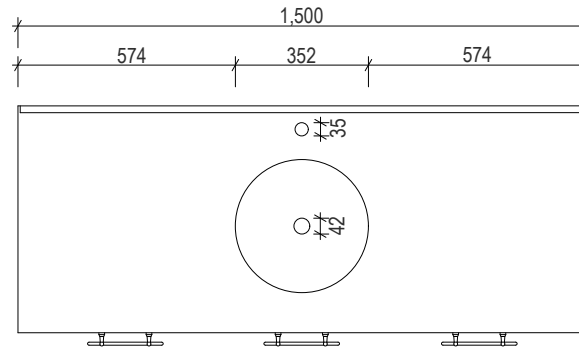


100
880

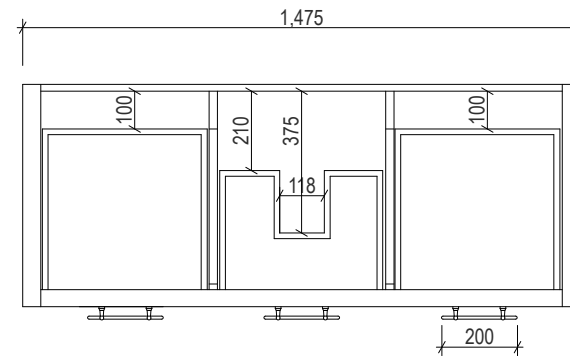


1500
980
100
180
180
236
131

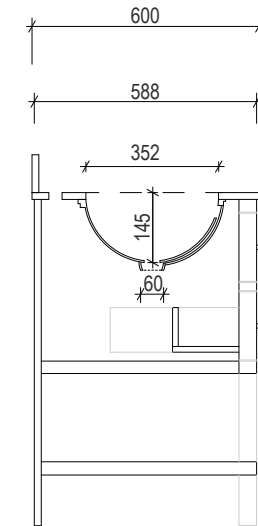


1500
574 352 574
35
42

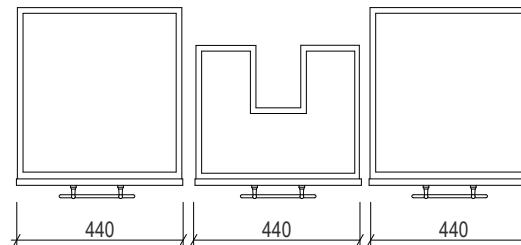
80
352
600
106



1475
100 210 375 100
118
200



600
588
352
145
160
588



440 440 440

370
450
20

100
880



Vanity By Design
ABN: 99 121 837 143

Brisbane Address:
241 Monier Road, Darra QLD 4076

Phone: Brisbane (07) 3376 6055

Email: enquiries@vanitybydesign.com.au
Website: <https://www.vanitybydesign.com.au/>

Name:	Newberry 1500 Single
Size :	1500 (W) mm x 600 (D) mm x 880 (H) mm
Type:	Freestanding
Cabinet Material:	Solid Sustainable Plantation Timber
Basin Material:	Ceramic under-mount basin with overflow protection
Bench Top Finish:	As advertised
Splashback:	Removable splashback (NOT FULLWIDTH SPLASHBACK)
Taphole Options:	1 taphole or 3 tapholes
Vanity Colour Options:	As advertised *Custom Paint Available

Note:
Mirrors, Wastes and Tapware not included.
Plumbing fixtures must be installed by a qualified plumber (waste not supplied).
Vanity must be installed by a qualified tradesperson.
Failure to do so may void the warranty.
Vanity By Design vanities include a 5 year warranty on cabinets and tapware and 12 month warranty on tops, basins, mirrors, mirror shelves and mirror cabinets.

Caution:
Component may be heavy and require two people to lift.
Do not stand or sit on vanity.